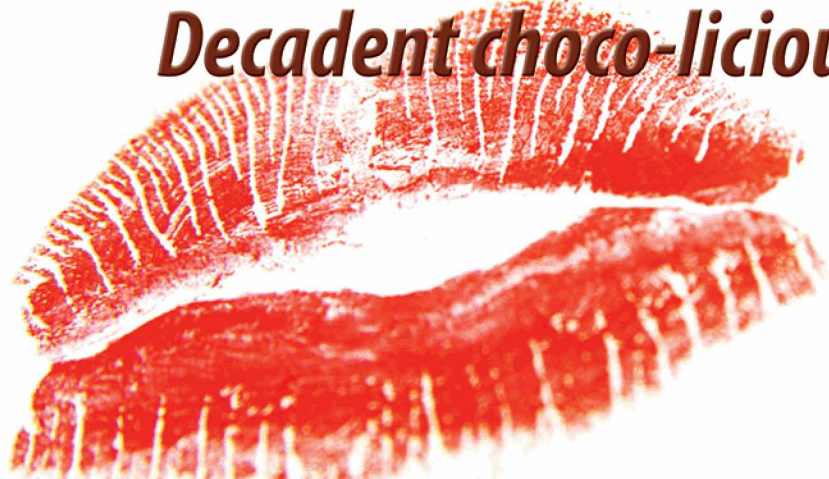


# ***Pamper Your Valentine***

## ***Decadent choco-licious facial experience ...***



*Satisfy your chocolate cravings by indulging in a facial with deep cleansing, exfoliation and massage. Each session includes a moisturizing hand and foot treatment plus a shoulder and neck massage using whipped chocolate massage cream. Top it off with a paraffin hand treatment and Jane Iredale mineral makeup touch up.*

### ***The First Kiss***

*Seasonal Facial  
\$95 (1 Hour)*

*Relax and enjoy deep cleansing with rose infused steam, a hydrating masque with rose essential oils, pumpkin soufflé massage cream and sugary sweet crystal lip recovery.*

### ***The Chocolate Kiss***

*Seasonal Facial and Peel  
\$105 (1 Hour)*

*Experience deep relaxation with dark chocolate and cherries. Treatment includes a deep cleanse with steam, a cherry berry revitalizing peel, semi-sweet chocolate hydrating masque and sugary sweet crystal lip recovery.*

### ***The Ultimate Kiss***

*Ultimate Facial and Peel  
\$160 (Approx 90 Min)*

*This facial is sure to please all of your five senses. Begin with a deep cleanse with steam, cherry berry revitalizing peel and semi-sweet chocolate hydrating masque. Enjoy a crystal free microdermabrasion and a sugary sweet crystal lip recovery.*

**ADVANCED**  
*Aesthetics*  
by Wichita Clinic

316-609-4440  
9211 E 21st St  
[wichitaclinicaesthetics.com](http://wichitaclinicaesthetics.com)

*All special offers expire 2/28/11  
Visit our website for more details.*